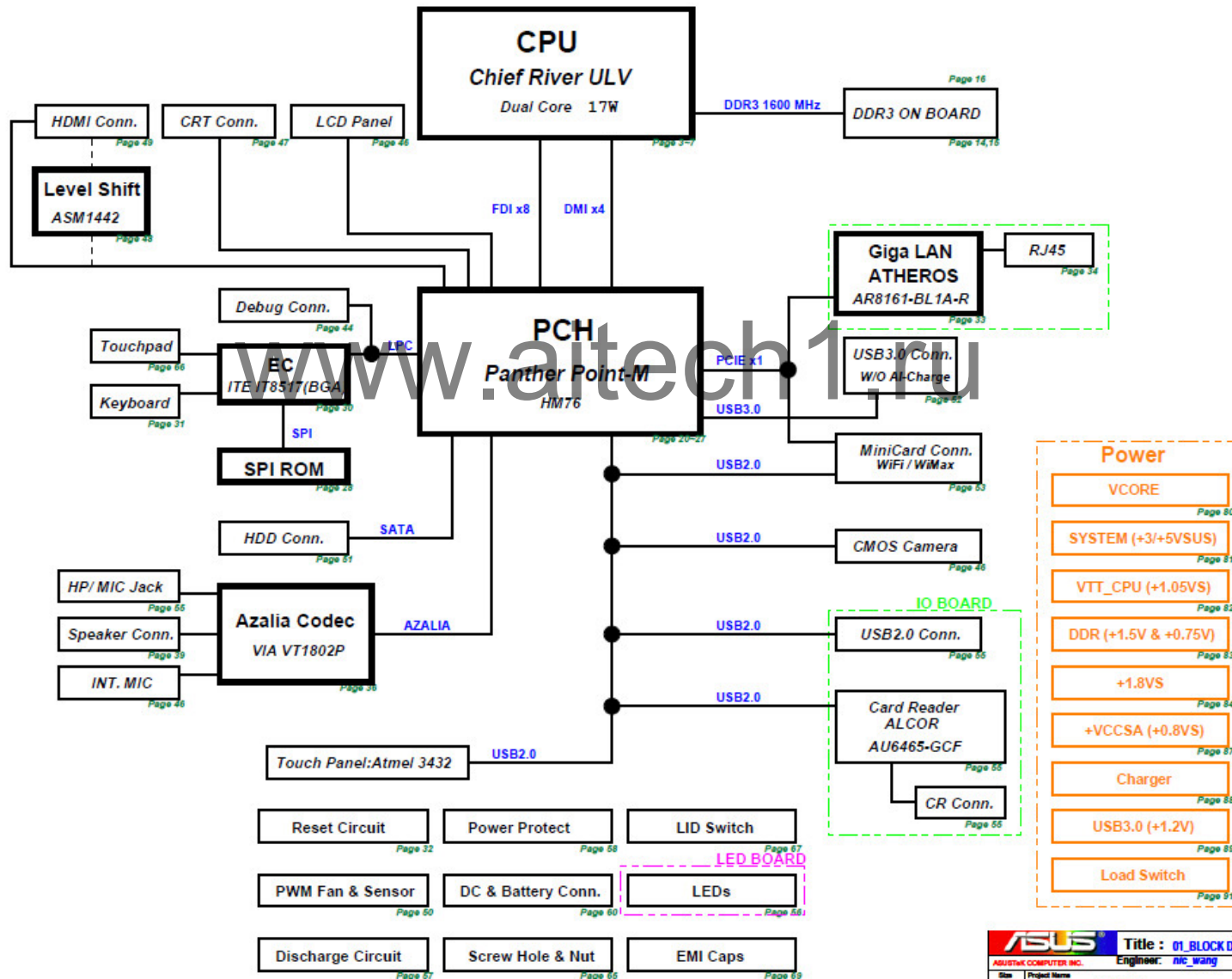
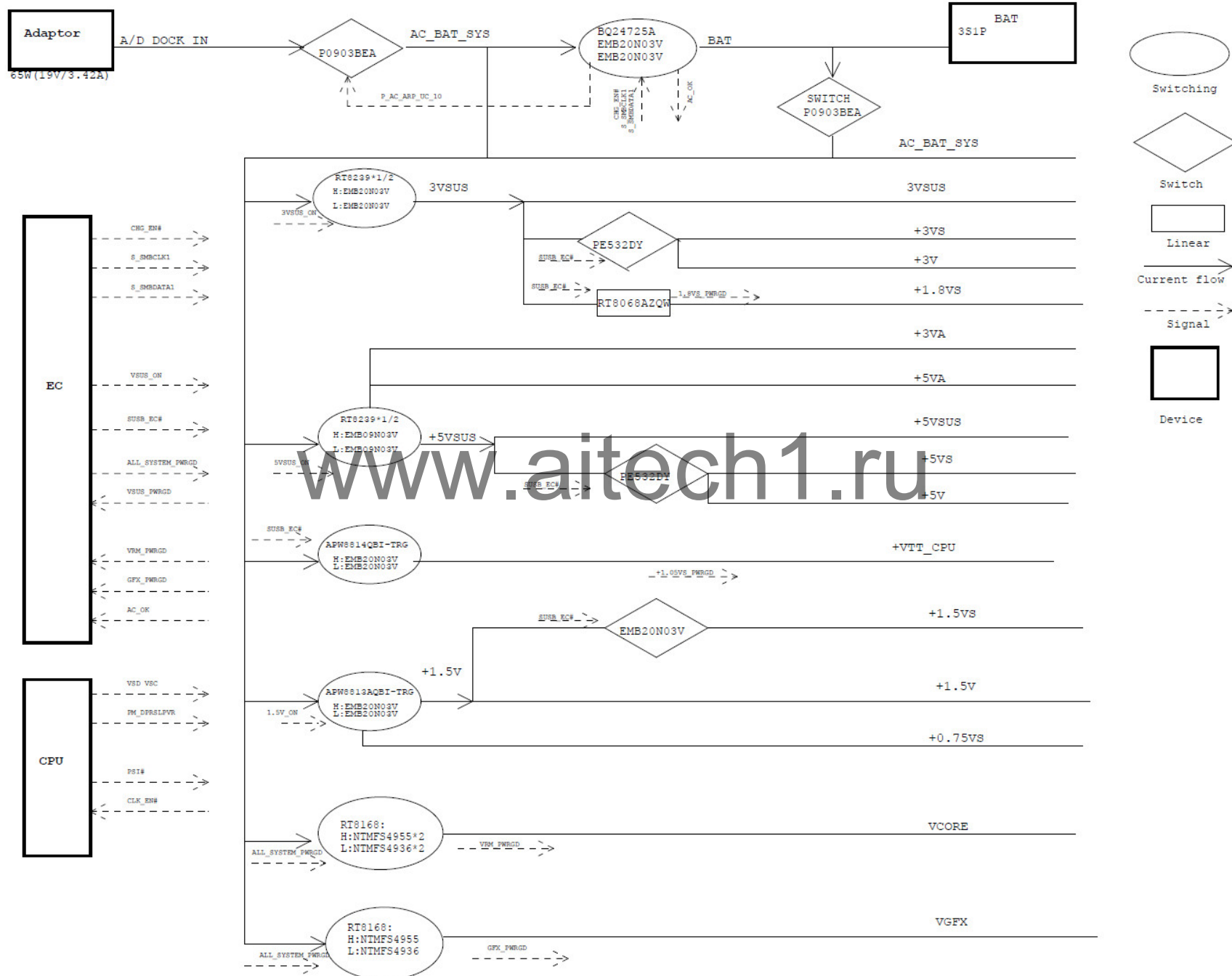


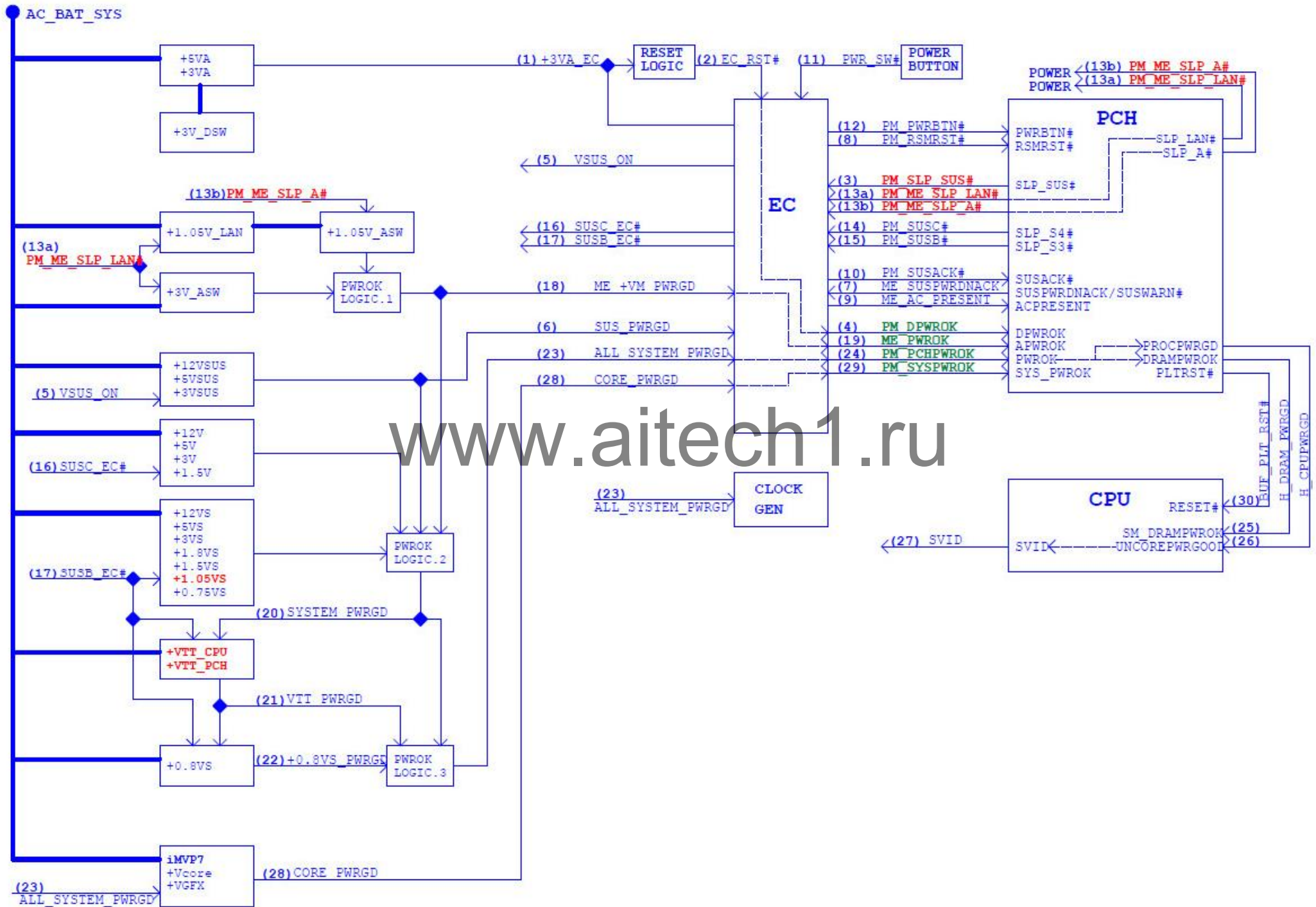
## S300CA BLOCK DIAGRAM



# POWER FLOW



# POWER ON SEQUENCE



## AC-IN Mode

## Power-On Sequence



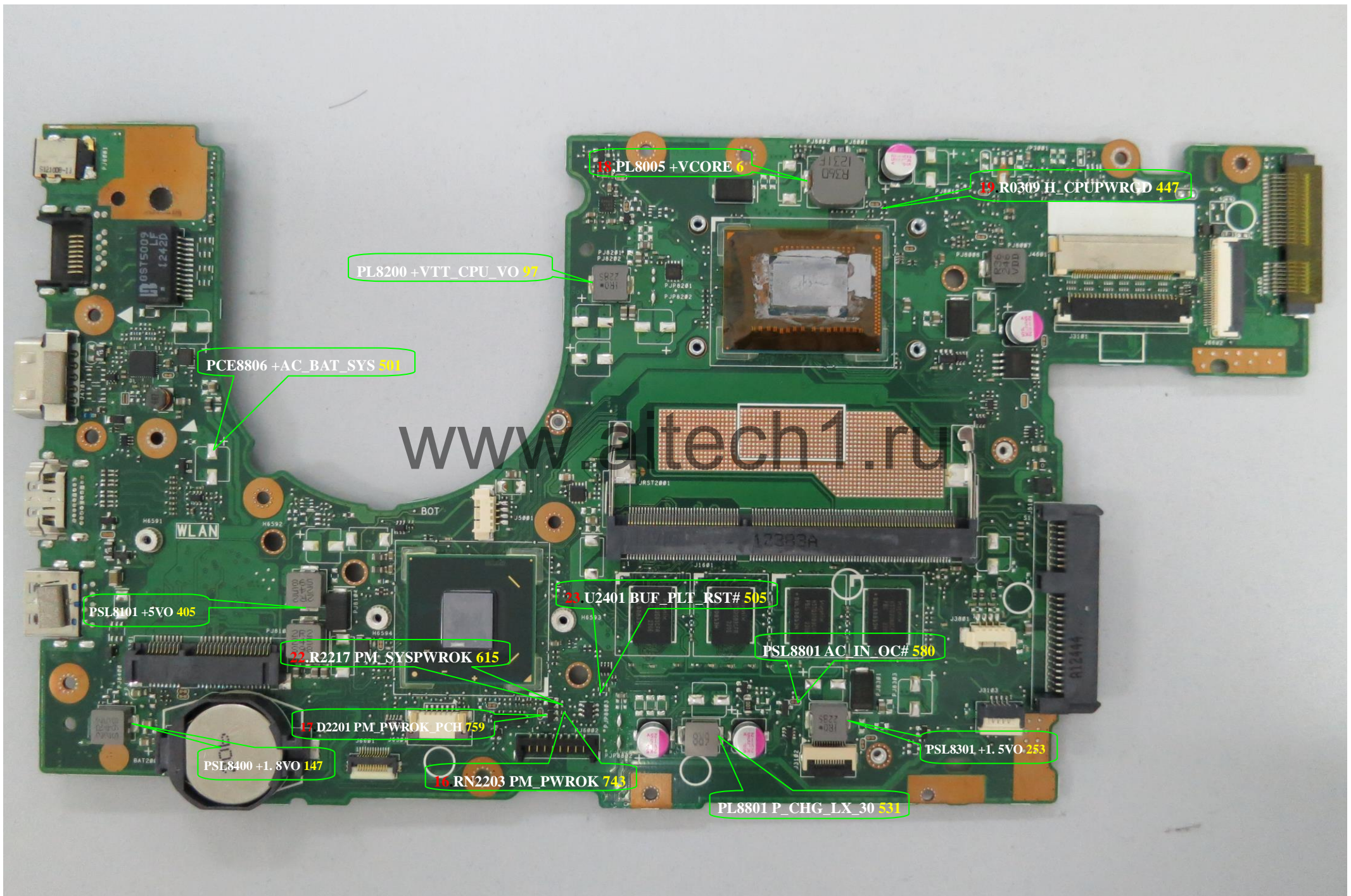
## DC-IN Mode

## Power-On Sequence





# Signal Measure Point-Bottom





1. D3202 +3VA EC 478

2. D3202 EC\_RST 681

3. Q3002 ME\_SUSPWRDNACK EC 374

4. D5804 +3VSUS\_PWRGD 556

5. D5804 +5VSUS\_PWRGD 565

6. RN3005 PM\_RSMRST# 573

7. RN3006 PM\_SUSC# 385

8. SW5901 PWR\_SW# 772

9. R0702 PM\_PWRBTN# 539

10. D3002 SLP\_A# 379

11. RN3006 PM\_SUSC# 385

12. RN3006 PM\_SUSB# 386

13. P0811 SLP\_LAN# 300

14. PD8403 SUSB\_EC# 570

15. D5801 ALL\_SYS\_PWRGD 518

16. P09106 SUSC\_EC# 385

17. P08108 +5VSUS\_ON 743

18. P08108 +3VSUS\_ON 627

19. D2207 ME\_AC\_PRESENT 574

20. PSL8006 VR\_SVID\_DATA 76

21. SL5807 CORE\_PWRGD 542

22. PSL8007 VR\_SVID\_CLK 67

www.electronic1.ru

ASUS P55CA MAIN BOARD  
PCB MADE IN CHINA